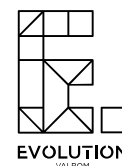






FACT SHEET



_WEATHER

 SPRING	▲ 22°C ▼ 16°C
 SUMMER	▲ 26°C ▼ 19°C
 AUTUMN	▲ 18°C ▼ 12°C
 WINTER	▲ 15°C ▼ 10°C

LOCATION

Located about 15 minutes from the airport, close to the metro and with bicycles nearby, Hotel EVOLUTION Valbom is next to the emblematic Eduardo VII Park, the Calouste Gulbenkian Museum and the El Corte Inglés Shopping Centre. Perfect for both leisure and business travellers.

SERVICES & FACILITIES

Self check-in | Recepção 24h | 4 espaços de restauração | Grab&Go | Wellbeing by SAYANNA abertas 24/7 | High Speed Wi-Fi | Lavandaria / Limpeza a seco | Parque de estacionamento | Staff Multilíngue

Mediante Pedido: Aluguer automóveis | Babysitting | Assistência Médica 24h

NEARBY

PLACES OF INTEREST:

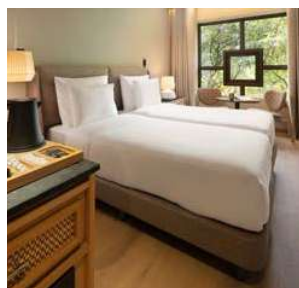
Eduardo VII Park | St George's Castle
Ribeira Market | Praça do Comércio
Lisbon Oceanarium

CULTURAL SPACES:

Calouste Gulbenkian Museum
Dona Maria National Theatre
Jerónimos Monastery

SHOPPING AREAS:

El Corte Inglés Shopping Centre
Saldanha Residence
Atrium Saldanha



ACCOMMODATION

All 113 rooms and suites stand out for their elegant beige and brown colours, creating an atmosphere of comfort. Modern, bright and well-equipped, they offer the essential serenity after a day in the city.

35 Cool Room

15 Cool Balcony Room

53 Cool Urban View

8 Cool Balcony Urban View

2 Coolest Balcony Suite



BARS & RESTAURANTS

EVOLUTION Valbom has 3 different dining areas, in addition to the 24/7 Grab&Go service. The Restaurant "The Living Room & The Kitchen", "The Patio" and the "Upper Deck".

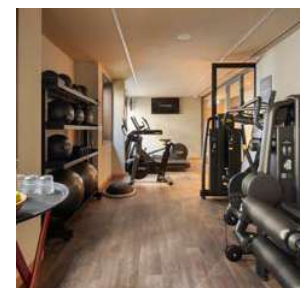
In the open space The Living Room & The Kitchen you will find a relaxed atmosphere where you can have a drink and enjoy a meal in a Gastrobar Restaurant.

On the Upper Deck you will find a modern rooftop bar with a water mirror and an amazing panoramic view over the city.



EVENTS & CO-WORKING

EVOLUTION Valbom offers multiple working experiences, in several semi-private spaces. "The Social Room" and "The Creative Room" are fully equipped with technology and facilities to work in privacy while benefiting from the creative and relaxed atmosphere of our coworking community.



WELLBEING BY SAYANNA

The perfect haven for exercise, invigoration and relaxation, with a 24-hour gym with advanced Technogym equipment.